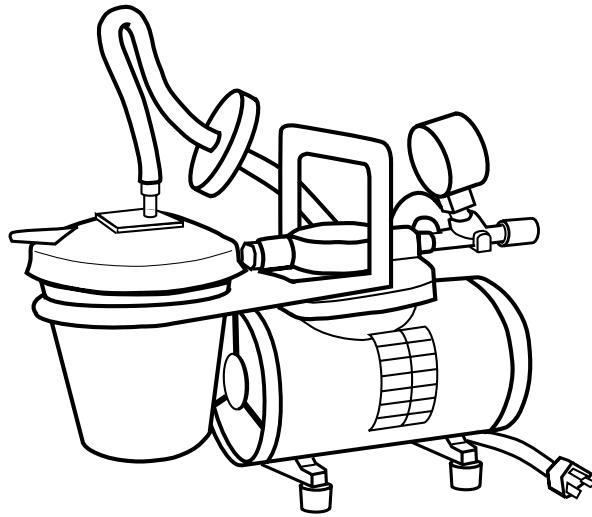


MJ190-2 API Portable Aspirator

DIRECTIONS FOR USE



*Read and understand the following information and instructions included with this product before using.
This information is for your safety and to prevent damage to this product.*



WARNING: API Portable Aspirators are precision-made and are carefully assembled and wired. Therefore do not disassemble or attempt to repair these products. Only qualified personnel should perform repair service.



▲ CAUTION: To reduce risk of electrical shock...

1. Do not disassemble. Disassembly or attempted repairs if accomplished incorrectly can create electrical shock hazard. Refer servicing to qualified service agencies only.
2. If this plug is supplied with a three pronged plug, connect unit to a properly grounded outlet only.

▲ WARNING: To reduce risk of electrocution...

1. This product should never be left unattended when plugged in.
2. Always unplug this product immediately after using and store in dry place.
3. Do not use this product in or near area where it can fall or be pulled into water or other liquids.
4. Do not reach for this product if it has fallen into liquid. Unplug immediately.
5. Never operate this product outdoors in the rain or in a wet area.

▲ DANGER: To reduce risk of explosion or fire...

1. Do not use this product in or near explosive atmospheres or where aerosol (spray) products are being used.
2. Do not pump anything other than atmospheric air.
3. Do not pump combustible liquids or vapors with this product or use in or near an area where flammable or explosive liquids or vapors may exist.
4. Do not use this product near flames.

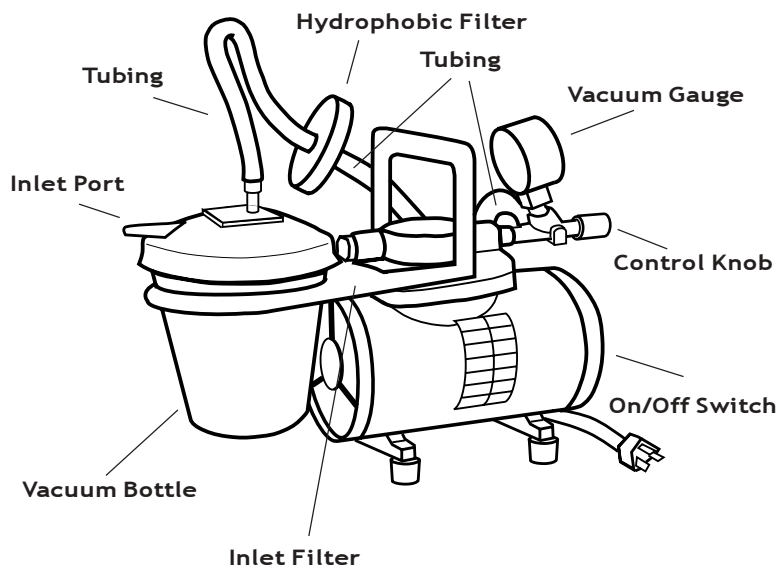
▲ CAUTION: To prevent injury...

1. Close supervision is necessary when this product is used near children or invalids. Never allow children to operate unit.
2. Never operate this product if it has a damaged cord or plug if it is not working properly. If it has been dropped or damaged or if it has fallen into water, return the product to a service center for examination and repair.
3. Keep the cord away from heated surfaces.
4. Never block any air openings (inlet) of this product or place it on a soft surface where the openings may be blocked. Keep all air openings free of lint, dirt and other foreign objects.
5. Never use while sleeping or drowsy.
6. Never drop or insert fingers or any other object into openings.
7. Do not operate this product where oxygen is being administered.
8. This unit may be thermally protected and can automatically restart when the protector resets. Always disconnect power source before servicing.
9. Wear safety glasses or goggles when operating this product.
10. Use only in well ventilated area.
11. Do not use any tools or attachments without first determining maximum air pressure for that tool or attachment.
12. Never point any air nozzle or air sprayer toward another person or any part of the body.
13. All electrical products generate heat. To avoid serious burns never touch unit during or immediately after operation.

api

anthony products, inc.

MJ190-2 API Portable Aspirator Directions for Use



EXTENSION CORDS

Make certain your extension cord is in good condition. Make certain your extension cord wire is not less than 18 gauge for 25 feet, 16 gauge for 50 feet and 14 gauge for 100 feet.

SET-UP

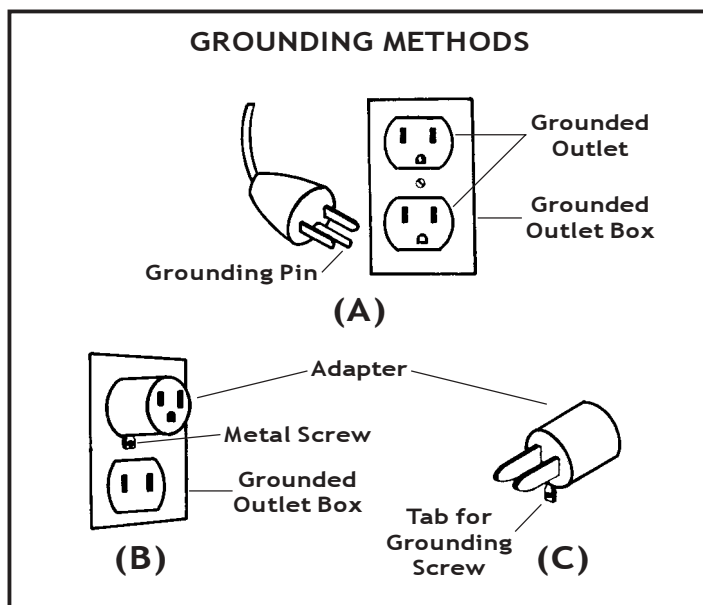
1. In order to become familiar with this unit, note the position of the following features: ON/OFF switch, vacuum and inlet ports on jar lid and mechanical shut-off under jar lid.
2. The mechanical shut-off valve under the lid will stop suction if collected fluids reach the shut-off valve level. If this happens, turn the unit "OFF" and empty the collection jar. It is recommended the jar be emptied when fluid reaches 600cc.
3. The hydrophobic filter is designed to filter out bacteria. It is also sensitive to liquids. When this filter comes in contact with liquid, the suction will stop. If this happens the filter must be replaced. However, if suctioning must continue and a replacement filter is not available, the vacuum tube connected to the hydrophobic filter can be connected directly to the unit.

NOTE: It is recommended that replacement parts, including the hydrophobic filter, tubing and jar assemblies be kept on hand at all times. See the section entitled "Replacement Parts".

OPERATION

WARNING: PROPER USE OF THIS PRODUCT IS NECESSARY TO AVOID PHYSICAL HARM. IMPROPER USE CAN CAUSE PERSONAL INJURY AND/OR TISSUE DAMAGE. THIS PRODUCT SHOULD NOT BE USED UNLESS THE OPERATOR HAS BEEN INSTRUCTED BY A PHYSICIAN OR OTHER QUALIFIED HEALTH CARE PROFESSIONAL.

1. Check to see that the ON/OFF switch is in the OFF position. Plug power cord into electrical outlet.
2. Turn ON/OFF switch to "ON" position.
3. The control knob will adjust the vacuum. As the knob is turned counter clockwise, the vacuum will decrease. As the knob is turned clockwise, the vacuum will increase. Use only the vacuum setting directed by your physician or qualified health care professional. Using a setting higher than instructed may lead to a life threatening situation.



4. The collection jar should be emptied after every use or when fluid level reaches the safe full line during use. To empty the jar, turn the unit "OFF" and allow vacuum to return to zero (0). Remove tubing from vacuum port on lid, lift jar out of support bracket, remove lid and empty jar.

MAINTENANCE

It is recommended the jar and lid be cleaned after every use by the following method:

1. Vigorously wash jar, lid and tubing in detergent and water.
2. Disinfect jar, lid and tubing using MadaCide disinfectant.
3. Do not sterilize the jar or tubing by boiling. Temperatures above 170°F are not recommended.
4. The white inlet filter should be replaced at least every 3 months.

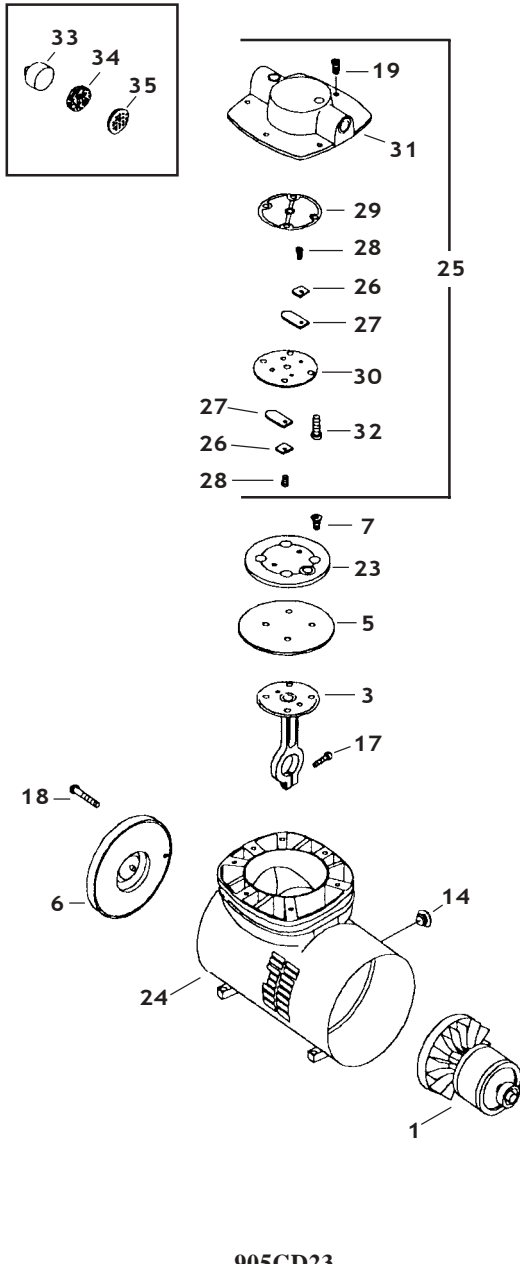
GROUNDING INSTRUCTIONS

This product should be grounded. In the event of an electrical short circuit, grounding reduces the risk of electrical shock by providing an escape wire for the electric current. This product is equipped with a cord having a grounding wire with a grounding plug. The plug must be plugged into an outlet that is properly installed and grounded.

Improper use of grounding plug can result in a risk of electrical shock. If repair or replacement of the cord or plug is necessary, do not connect the grounding wire to either flat blade terminal. The wire with insulation having an outer surface that is green with or without yellow stripes is the grounding wire. Check with a qualified electrician or serviceman if the grounding instructions are not completely understood, or if in doubt as to whether the product is properly grounded.

This product is for use on a normal 120V circuit, and has a grounding plug that looks like the plug illustrated in **SKETCH A**. A temporary adapter, which looks like the adapter illustrated in **SKETCHES B & C**, may be used to connect this plug to a 2-pole receptacle as shown in **SKETCH B** if properly grounded outlet is not available. The temporary adapter should be used only until a properly grounded outlet (**SKETCH A**) can be installed by a qualified electrician. The green colored rigid ear, lug and the like extending from the adapter must be connected to a permanent ground such as a properly grounded outlet box cover. Whenever the adapter is used, it must be held in place with a screw.

Drawing and Parts List



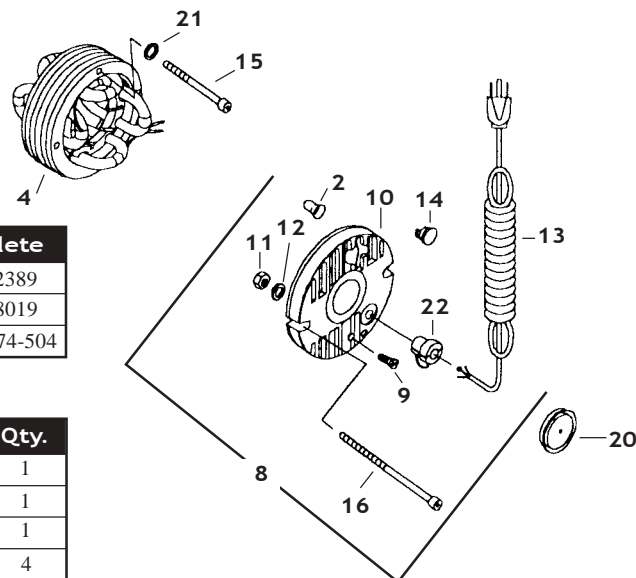
905CD23

Item #	Add	Description	Delete
1	667287	Shaft, Rotor, Fan & Brg. Ass'y.	602389
4	608848	Stator 230V 50Hz	608019
8	620018-504	Motor End Cap Assembly	614574-504

905CD23-837

Item #	Add	Description	Delete	Qty.
1	663679	Shaft, Rotor, Fan & Brg. Ass'y.	602389	1
4	608848	Stator 230V 50Hz	608019	1
24	661811-504	Housing	661824-504	1
NS	624266	Suction Cup Feet		4

Item #	Part #	Component Part	Description	Qty.
1	602389		Shaft, Rotor, Fan & Brg. Ass'y.	1
2	607034		Insulated Connector	2
3	607225		Connecting Rod	1
4	608019		Stator 115V 60Hz	1
5	608150		Diaphragm	1
6	614159-504		Front Cover	1
7	625540		Screw - Hold Down Plate	4
8	614574-504		Motor - End Cap Assembly	1
9		605018	Screw - Ground	1
10		614727-504	Motor End Cap	1
11		626328	Nut - Ground	1
12		626329	Lockwasher - Ground	1
13		633328	Cord Assembly	1
14	638111		Plug Button - Housing & MEC	2
15	625107		Screw - Stator	2
16	625108		Screw - Motor End Cap	2
17	625114		Screw - Connecting Rod	1
18	625337		Screw - Front Cover	2
19	625444		Screw - Head	6
20	614551		Bearing Cover	1
21	626509		Lockwasher - Stator	2
22	633222		Strain Relief	1
23	654966		Diaphragm Hold Down Plate	1
24	661824-504		Housing	1
25	664488-505		Head & Valve Plate Assembly	1
26		617045	Valve Keeper Strip	2
27		621102	Valve Flapper - Intake & Exhaust	2
28		625160	Screw - Valve Flapper	2
29		633560	O Ring Gasket	1
30		654963	Valve Plate	1
31		661661-504	Head	1
32		625606	Screw - Valve Plate	5
33	660710		Filter Body	1
34	641034		Filter - Foam	1
35	660767		Filter Body Cap	1



Replacement Parts and Warranty

REPLACEMENT PARTS

Component parts have been specifically designed to work with this unit. When ordering replacement parts be sure to order parts designed for this unit. Do not substitute generic parts. The following parts can be ordered as replacement parts:

NOTE: The following items are expendable, non-durable items that deteriorate with time, use and exposure to cleaning solutions. De-

pending on the frequency of use, the medical condition and the care in handling and use of these parts, they will need to be routinely inspected by the user and replaced to keep the unit operational, or to maintain proper sanitary conditions. The user is responsible for maintaining a spare supply of parts. It is recommended that the user do so in the event that a spare part is suddenly needed during use.

Replacement Parts:

Vacuum Bottle Tube
Filter Tube
Plastic Tube Connector
Hydrophobic Filter
Vacuum Gauge
Vacuum Bottle

IMPORTANT NOTICE TO PURCHASER: WARRANTY AND EXCLUSIVE REMEDIES

Anthony Products finished compressors and vacuum pumps, when properly installed and under normal conditions of use, are warranted by Anthony Products to be free from defects in material and workmanship at time of shipment. Warranty claims regarding API products must be asserted within 13 months (the "warranty period") from date of manufacture encoded on the product (unless otherwise agreed in writing or specified in an API quotation). The customer's exclusive remedy against API for a warranty claim or otherwise, shall be limited to repair or replacement of the subject API finished product if it is shown to have been defective in material and workmanship at time of shipment, and then only if the claim is asserted during the warranty period. API maximum liability under this exclusive remedy shall never exceed the cost of the fund the purchase price in lieu of repair or replacement. Except for such warranty and exclusive remedy as stated (and except for the express warranty of title) **API DISCLAIMS ALL OTHER WARRANTIES WITH RESPECT TO ITS API FINISHED PRODUCTS. WHETHER IM-**

PLIED, AND SPECIFICALLY DISCLAIMS THE IMPLIED WARRANTIES OF MERCHANTABILITY AND FITNESS FOR A PARTICULAR PURPOSE. IN NO EVENT SHALL API BE LIABLE TO CUSTOMER OR THIRD PARTIES IN WARRANTY, CONTRACT, NEGLIGENCE, STRICT LIABILITY, OR OTHERWISE, FOR ANY DAMAGES, WHETHER INCIDENTAL OR CONSEQUENTIAL, WHICH ARE ALLEGED TO HAVE BEEN CAUSED BY ONE OR MORE OF OUR PRODUCTS BEYOND THE COST TO THE CUSTOMER OF THE SUBJECT PRODUCT OR PRODUCTS. THE EXCLUSIVE REMEDY FOR ANY CLAIM HAVING BEEN LIMITED TO REPAIR OR REPLACEMENT AS AFORESAID.

Because API warranties and remedies extend only to our direct customers, the customer is not authorized to extend warranties on our behalf to anyone. Unauthorized extensions of warranties by the customer shall remain customer's responsibility.



7740 Records Street
Indianapolis, IN 46226
(317) 545-6196 • 800-428-1610
Fax (317) 543-3289
www.anthonypproducts.com